

GENERAL NOTES

B Box—Extension type Minneapolis pattern base (Mueller H-10300)

5 ¼ Box—Screw type depth adjustment with WATER on lid. (Tyler 6645)

Curb Stop—Ball type cc thread (Mueller 300 B-25155)

Corp Stop—Ball type cc thread (Mueller 300 B-25008)

Main Valves—Resilient Wedge (Mueller 2360 Series)

Hydrants 5 1/4—operating nut 1 1/2 pentagon, open right, 2 hose nozzles, 1 pumper nozzle national standard thread, all bolts below grade to be stainless steel, red in color. (Mueller Super Centurion 250 3 way, Waterous Pacer Classic with plain end shoe, Clow Medallion)

Saddles—double strap epoxy coated or bronze. (Mueller BR2S, DE2s) Smith Blair #317

Tapping Sleeve—Cl, DI Stainless Steel (Mueller H-304, H615)

Water Main—DI Class 52, DI PSI Class 350, PVC C900, C909.

PVC C-900 Watermain—Tracer cable shall be a direct bury, #10 THHN solid wire; wire is to be taped or attached in an approved manner to all water mains during installation, prior to backfilling.

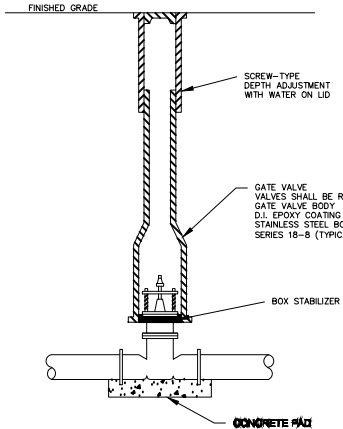
Repair Clamps—Full Seal Stainless

Copper—Type K

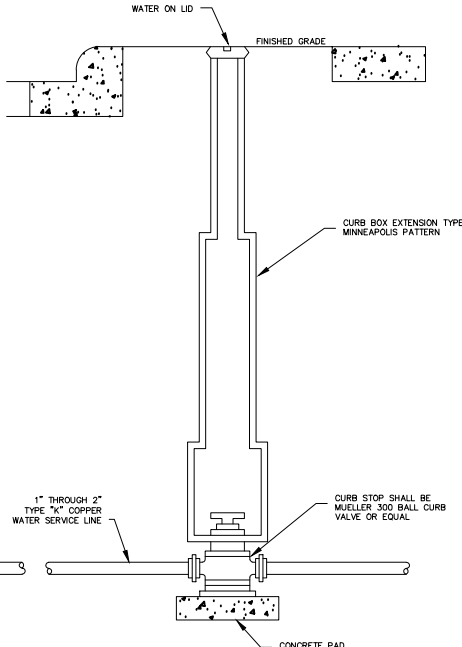
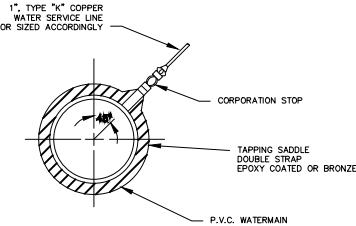
Meters—Supplied by City of Rochelle

All materials shall be manufactured in the US, if material is not available in the US please note what material is unavailable and where it is coming from in the quote.

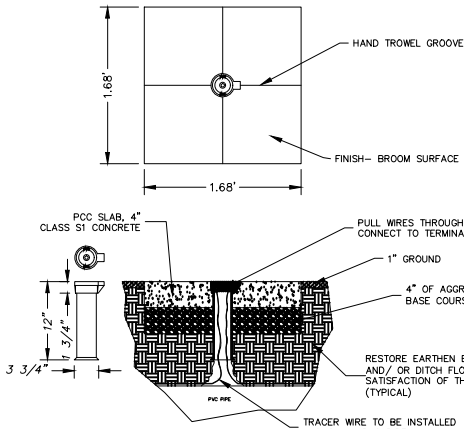
When the watermain is not looped form two source feeds, an automatic flush hydrant Hydor-Guard long neck surface drainage unti, or equal, is required.



MOUNT TAPPING SADDLE AND CORPORATION COCK ON LINE: OPEN COCK AND TAP MAIN WITH SPECIAL DRILL, CLOSE COCK AND ATTACH SERVICE LINE

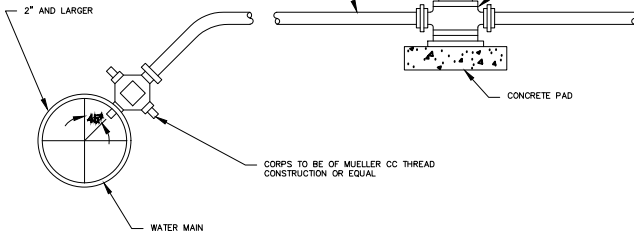


VALVE AND VALVE BOX INSTALLATION AND ASSY.

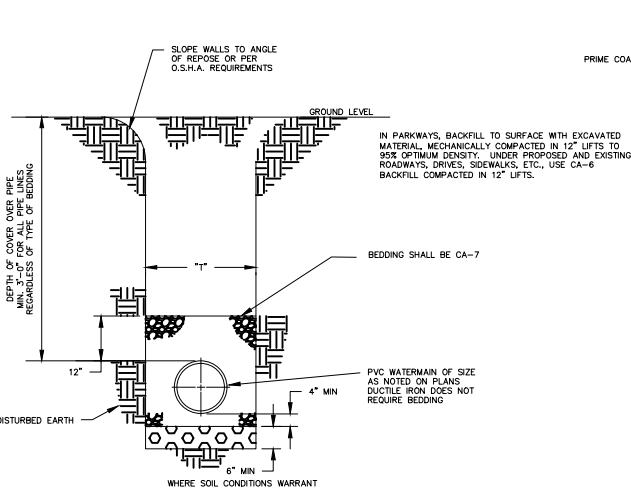


TRACER WIRE ACCESS BOX

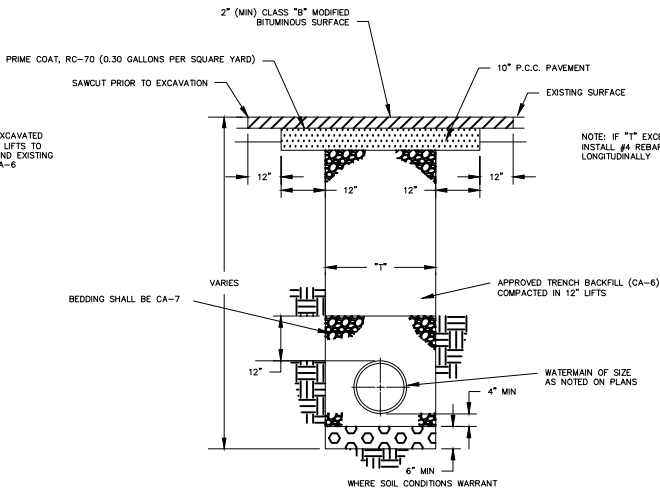
AT OR NEAR HYDRANT OR VALVE AS SHOWN ON PLANS OR AS DIRECTED BY ENGINEER



CURB BOX INSTALLATION AND ASSY.

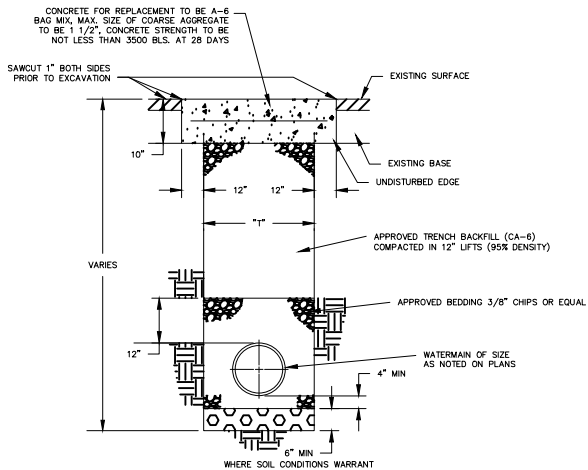


TYPICAL WATERMAIN TRENCH DETAIL



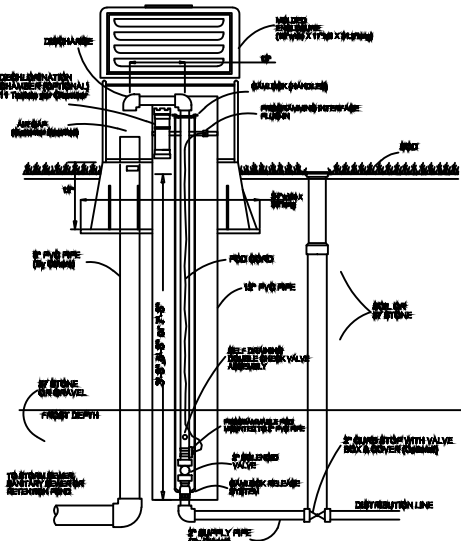
BITUMINOUS PAVEMENT REPLACEMENT

NOTE: PAVEMENT REPLACEMENT ON ANY EXISTING ROADS SHALL CONFORM TO CITY REQUIREMENTS

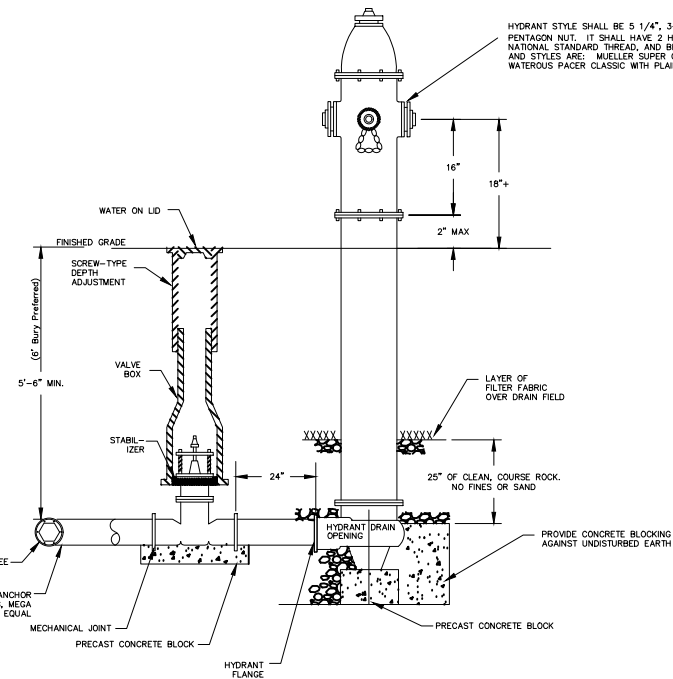


P.C.C. CONCRETE PAVEMENT REPLACEMENT

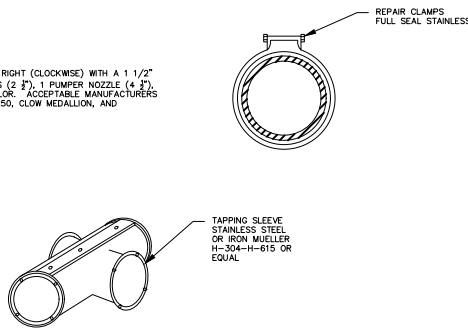
NOTE: PAVEMENT REPLACEMENT ON ANY EXISTING ROADS SHALL CONFORM TO COUNTY AND/OR CITY REQUIREMENTS



TYPICAL INSTALL HYDRO-GUARD HG-4 STANDARD



FIRE HYDRANT INSTALLATION AND ASSY.



MATERIAL NOTE: WATERMAIN SHALL NOT BE LESS THAN 8" DIA. MATERIALS DUCTILE IRON PIPE (ASSA-C-151) CLASS 50 CEMENT LINED WITH MECHANICAL OR PUSH ON TYPE JOINT AND ELASTOMERIC SEALS (ASTM 477) OR PVC AWWA C-900 OR C-909. CLASS 150 DR18, WITH BELL & SPIGOT PUSH ON JOINT (ASTM 477) OR DUCTILE IRON PRESSURE 350, FOR 8-12" AND 250 FOR 14-20" WITH PUSH ON TYTON JOINT.

WHEN C-900 OR C-909 PIPE IS USED, A TERMINAL BOX (VALVE OR EQUAL), SUITABLE FOR FLUSH BURIAL MUST BE PLACED AT GRADE EVERY 500 FEET. THE BOX MUST HAVE A 2 1/2" LOCK CAST IRON TOP AND THE WIRE MUST BE SECURED AT THE TERMINATION POINT.

NOTE: ALL WATERMAIN CONSTRUCTION METHODS AND MATERIALS SHALL BE IN ACCORDANCE WITH THE "STANDARD SPECIFICATIONS FOR WATER AND SEWER CONSTRUCTION IN ILLINOIS", LATEST EDITION.

NOTICE: THE CONTRACTOR MUST CALL J.U.L.I.E. (1-800-482-0123) BEFORE EXCAVATING.

STANDARD DETAILS FOR  
WATER MAIN IMPROVEMENTS

CITY OF ROCHELLE  
ROCHELLE MUNICIPAL UTILITIES

DRAWN BY: B. Russell  
APPROVED BY:  
SCALE: NONE  
DATE: 5/19/2008  
REVISED: 04/01/2010

SHEET NO.: