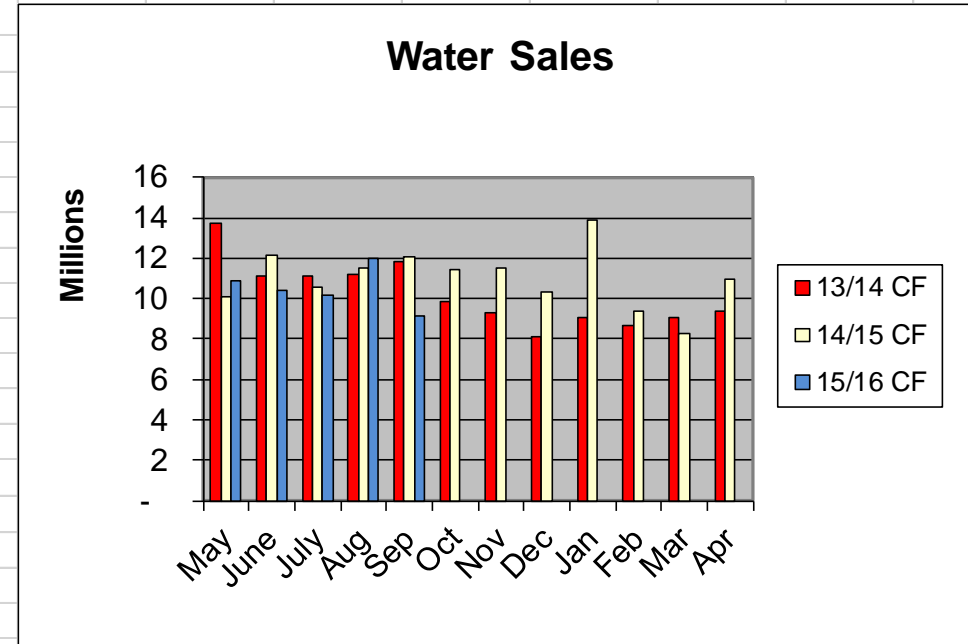


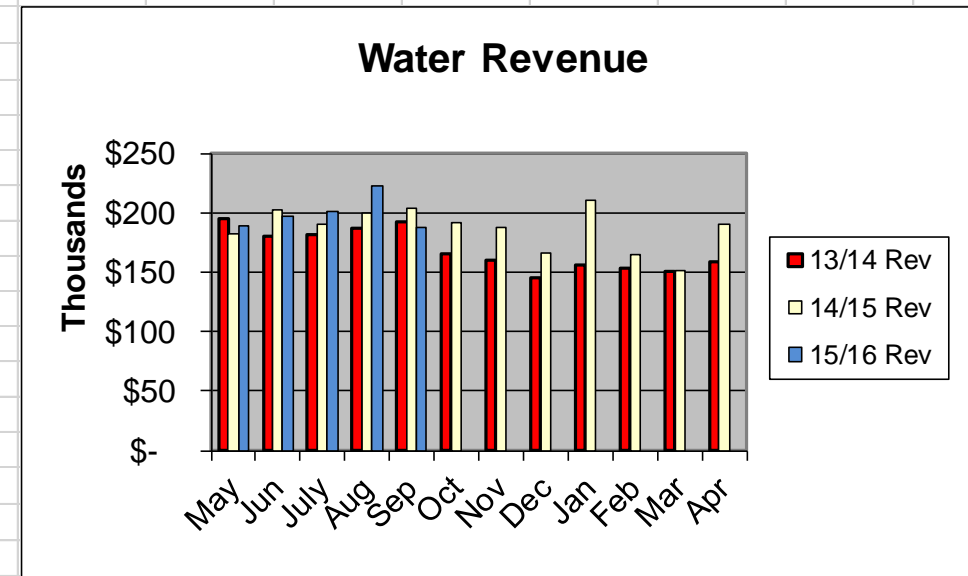
WATER C.F. SALES

Month	13/14 CF	14/15 CF	15/16 CF
May	13,751,466	10,078,949	10,850,341
June	11,123,505	12,110,156	10,441,261
July	11,135,660	10,543,881	10,192,731
Aug	11,205,199	11,477,584	11,958,369
Sep	11,826,189	12,042,288	9,170,664
Oct	9,888,821	11,395,120	-
Nov	9,304,538	11,487,901	-
Dec	8,138,189	10,310,199	-
Jan	9,077,096	13,890,055	-
Feb	8,676,578	9,410,299	-
Mar	9,102,689	8,251,588	-
Apr	9,419,507	10,993,046	-
End of year total	122,649,437	131,991,066	N/A
Year to date compare	59,042,019	56,252,858	52,613,366
Delta to year before		95.28%	93.53%



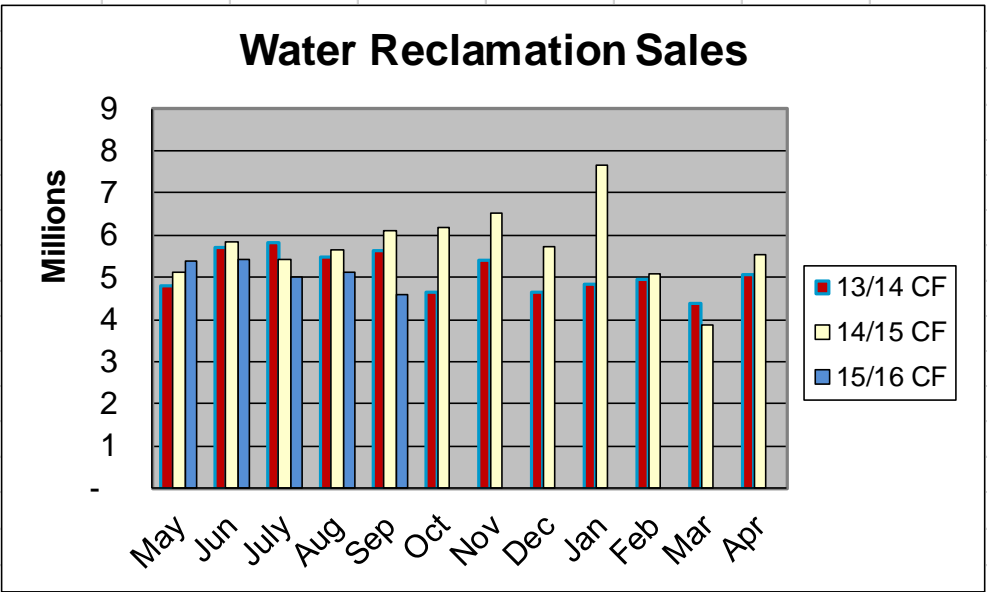
WATER REVENUE

Month	13/14 Rev	14/15 Rev	15/16 Rev
May	\$ 194,796	\$ 181,956	\$ 189,312
Jun	\$ 180,209	\$ 202,343	\$ 196,921
July	\$ 181,336	\$ 189,679	\$ 200,460
Aug	\$ 187,011	\$ 200,020	\$ 222,529
Sep	\$ 191,729	\$ 203,613	\$ 187,668
Oct	\$ 165,061	\$ 191,070	\$ -
Nov	\$ 160,120	\$ 187,577	\$ -
Dec	\$ 144,531	\$ 166,372	\$ -
Jan	\$ 155,574	\$ 210,141	\$ -
Feb	\$ 152,997	\$ 165,114	\$ -
Mar	\$ 150,922	\$ 151,637	\$ -
Apr	\$ 158,790	\$ 189,959	\$ -
End of year total	\$ 2,023,076	\$ 2,239,481	N/A
Year to date compare	935,081	977,611	996,890
Delta to year before		104.55%	101.97%



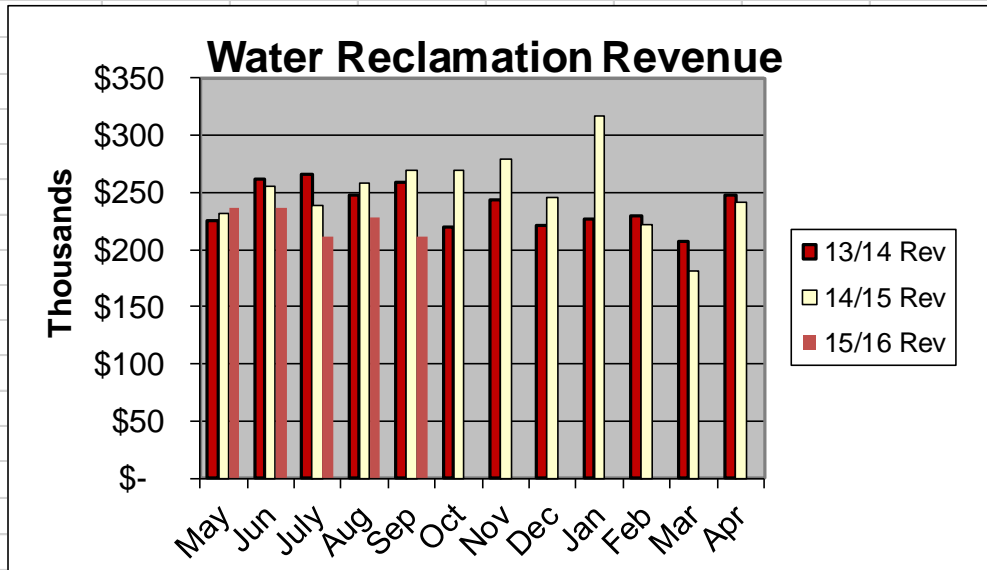
WATER RECLAMATION C.F. SALES

Month	13/14 CF	14/15 CF	15/16 CF
May	4,780,396	5,120,245	5,395,027
Jun	5,695,426	5,843,622	5,432,884
July	5,840,629	5,441,946	5,021,359
Aug	5,479,165	5,649,713	5,112,912
Sep	5,632,986	6,102,863	4,573,261
Oct	4,665,716	6,171,012	-
Nov	5,393,390	6,517,996	-
Dec	4,646,954	5,719,064	-
Jan	4,843,393	7,658,692	-
Feb	4,964,979	5,073,586	-
Mar	4,363,147	3,880,448	-
Apr	5,056,409	5,538,539	-
End of year total	61,362,590	68,717,726	N/A
Year to date compare	27,428,602	28,158,389	25,535,443
Delta to year before		102.66%	90.69%



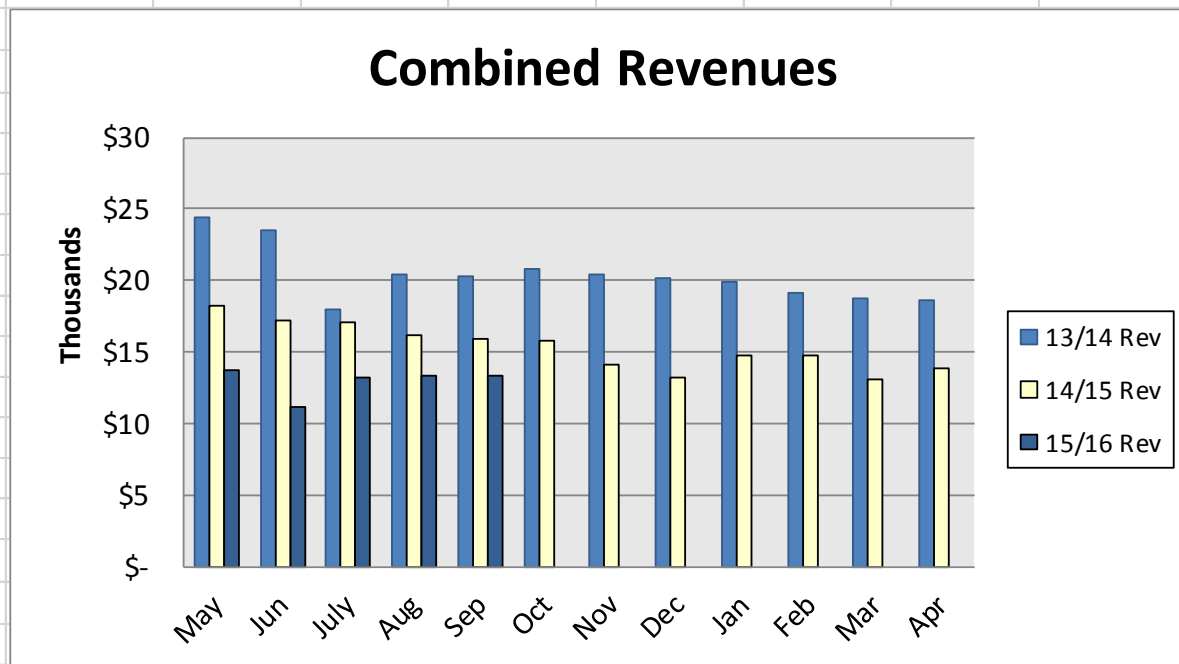
WATER RECLAMATION REVENUE

Month	13/14 Rev	14/15 Rev	15/16 Rev
May	\$ 225,746	\$ 231,450	\$ 235,888
Jun	\$ 261,684	\$ 255,822	\$ 236,155
July	\$ 265,269	\$ 238,952	\$ 210,964
Aug	\$ 248,222	\$ 257,784	\$ 227,798
Sep	\$ 258,054	\$ 268,890	\$ 211,018
Oct	\$ 220,174	\$ 269,898	\$ -
Nov	\$ 243,499	\$ 279,189	\$ -
Dec	\$ 220,594	\$ 245,360	\$ -
Jan	\$ 226,034	\$ 316,960	\$ -
Feb	\$ 229,941	\$ 221,011	\$ -
Mar	\$ 206,688	\$ 180,831	\$ -
Apr	\$ 247,363	\$ 240,630	\$ -
End of year total	\$ 2,853,268	\$ 3,006,777	N/A
Year to date compare	1,258,975	1,252,898	1,121,823
Delta to year before		99.52%	89.54%



COMBINED REVENUE (FIBER, WIRELESS, DIAL-UP, VOIP, DATA SERVICES)

Month	13/14 Rev	14/15 Rev	15/16 Rev
May	24,432	18,288	13,671
Jun	23,574	17,265	11,127
July	17,955	17,063	13,154
Aug	20,400	16,238	13,348
Sep	20,252	15,949	13,368
Oct	20,754	15,732	-
Nov	20,467	14,167	-
Dec	20,201	13,186	-
Jan	19,865	14,795	-
Feb	19,189	14,778	-
Mar	18,711	13,113	-
Apr	18,624	13,848	-
End of year total	244,425	184,423	N/A
Year to date compare	106,613	84,803	64,667
Delta to year before		79.54%	76.26%



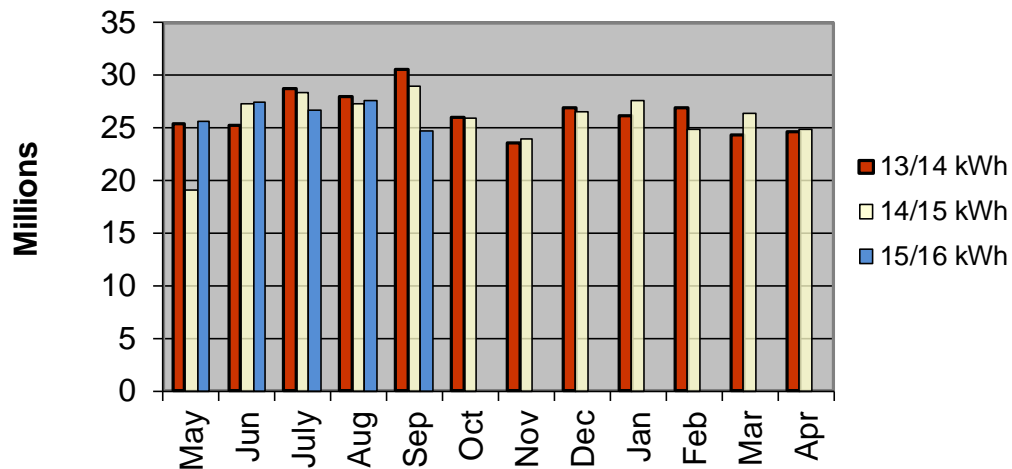
ELECTRIC KWH SALES

Month	13/14 kWh	14/15 kWh	15/16 kWh
May	25,347,137	19,032,948	25,604,831
Jun	25,170,233	27,215,041	27,403,057
July	28,784,734	28,283,842	26,647,473
Aug	27,929,359	27,318,314	27,612,926
Sep	30,588,948	28,990,563	24,777,186
Oct	26,064,911	25,852,310	-
Nov	23,551,289	23,922,223	-
Dec	26,941,718	26,543,348	-
Jan	26,130,544	27,575,087	-
Feb	26,837,045	24,844,214	-
Mar	24,368,133	26,328,039	-
Apr	24,650,987	24,894,051	-
End of year total	316,365,038	310,799,980	N/A
Year to date compare	137,820,411	130,840,708	132,045,473
Delta to year before		94.94%	100.92%

ELECTRIC REVENUE

Month	13/14 Rev	14/15 Rev	15/16 Rev
May	\$ 2,395,359	\$ 2,664,064	\$ 2,684,938
Jun	\$ 2,479,764	\$ 2,844,503	\$ 2,898,484
July	\$ 2,754,413	\$ 2,756,364	\$ 2,749,293
Aug	\$ 2,758,611	\$ 2,887,489	\$ 3,150,311
Sep	\$ 2,919,629	\$ 3,015,601	\$ 2,675,382
Oct	\$ 2,480,557	\$ 2,698,549	\$ -
Nov	\$ 2,393,623	\$ 2,659,590	\$ -
Dec	\$ 2,586,495	\$ 2,771,607	\$ -
Jan	\$ 2,671,804	\$ 2,995,035	\$ -
Feb	\$ 2,869,770	\$ 2,756,720	\$ -
Mar	\$ 2,505,488	\$ 2,786,631	\$ -
Apr	\$ 2,550,099	\$ 2,726,798	\$ -
End of year total	\$ 31,365,612	33,562,951	N/A
Year to date compare	13,307,776	14,168,021	14,158,408
Delta to year before		106.46%	99.93%

Electric kWh



Electric Sales

