

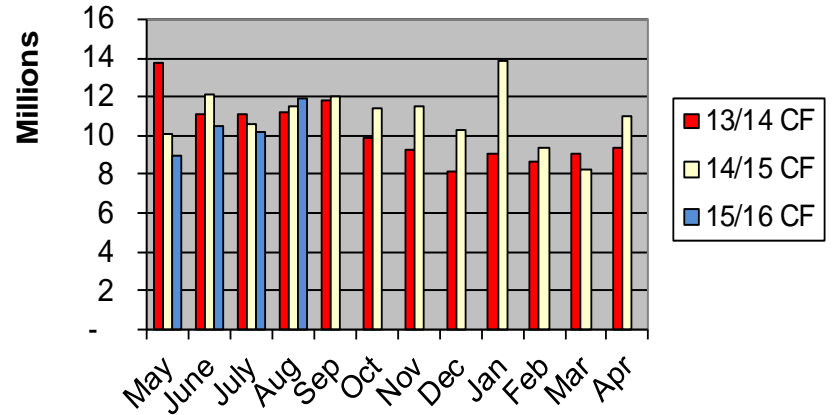
**WATER C.F. SALES**

Month	13/14 CF	14/15 CF	15/16 CF
May	13,751,466	10,078,949	8,951,990
June	11,123,505	12,110,156	10,441,261
July	11,135,660	10,543,881	10,192,731
Aug	11,205,199	11,477,584	11,958,369
Sep	11,826,189	12,042,288	-
Oct	9,888,821	11,395,120	-
Nov	9,304,538	11,487,901	-
Dec	8,138,189	10,310,199	-
Jan	9,077,096	13,890,055	-
Feb	8,676,578	9,410,299	-
Mar	9,102,689	8,251,588	-
Apr	9,419,507	10,993,046	-
<b>End of year total</b>	<b>122,649,437</b>	<b>131,991,066</b>	<b>41,544,351</b>
<b>Year to date compare</b>	<b>122,649,437</b>	<b>131,991,066</b>	<b>41,544,351</b>
<b>Delta to year before</b>		<b>107.62%</b>	<b>31.48%</b>

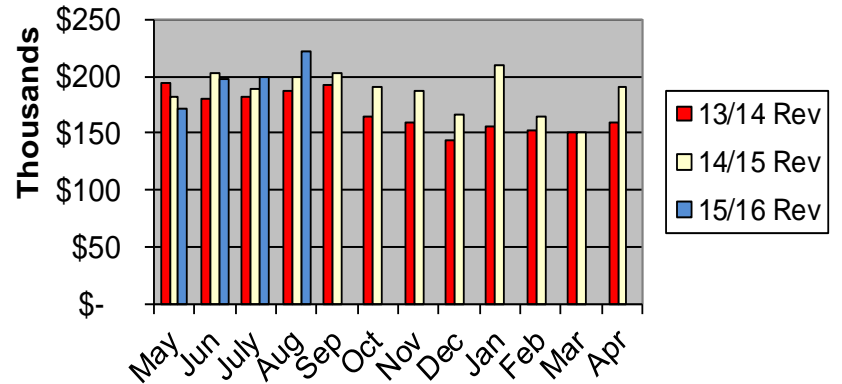
**WATER REVENUE**

Month	13/14 Rev	14/15 Rev	15/16 Rev
May	\$ 194,796	\$ 181,956	\$ 171,233
Jun	\$ 180,209	\$ 202,343	\$ 196,921
July	\$ 181,336	\$ 189,679	\$ 199,700
Aug	\$ 187,011	\$ 200,020	\$ 222,529
Sep	\$ 191,729	\$ 203,613	\$ -
Oct	\$ 165,061	\$ 191,070	\$ -
Nov	\$ 160,120	\$ 187,577	\$ -
Dec	\$ 144,531	\$ 166,372	\$ -
Jan	\$ 155,574	\$ 210,141	\$ -
Feb	\$ 152,997	\$ 165,114	\$ -
Mar	\$ 150,922	\$ 151,637	\$ -
Apr	\$ 158,790	\$ 189,959	\$ -
<b>End of year total</b>	<b>\$ 2,023,076</b>	<b>\$ 2,239,481</b>	<b>\$ 790,383</b>
<b>Year to date compare</b>	<b>2,023,076</b>	<b>2,239,481</b>	<b>790,383</b>
<b>Delta to year before</b>		<b>110.70%</b>	<b>35.29%</b>

**Water Sales**

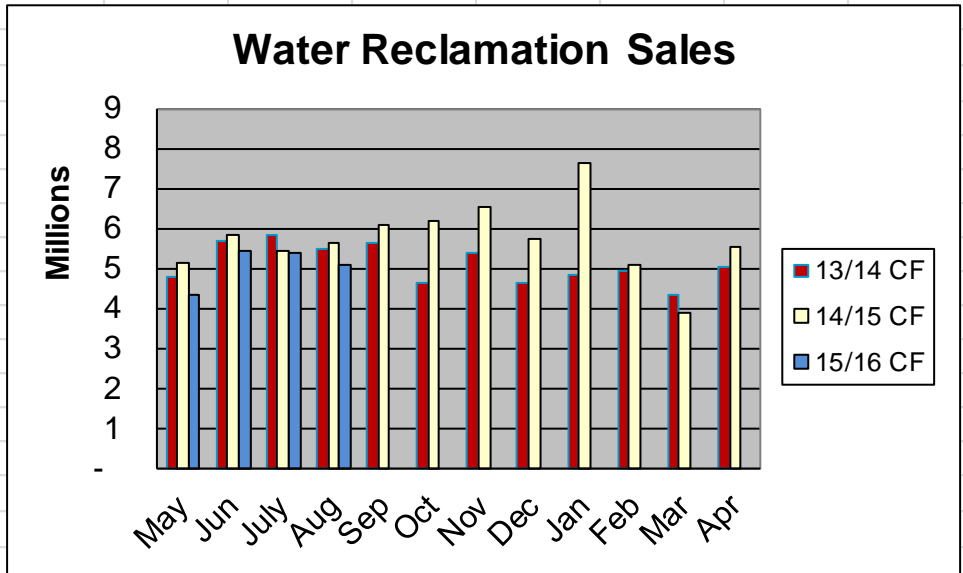


**Water Revenue**



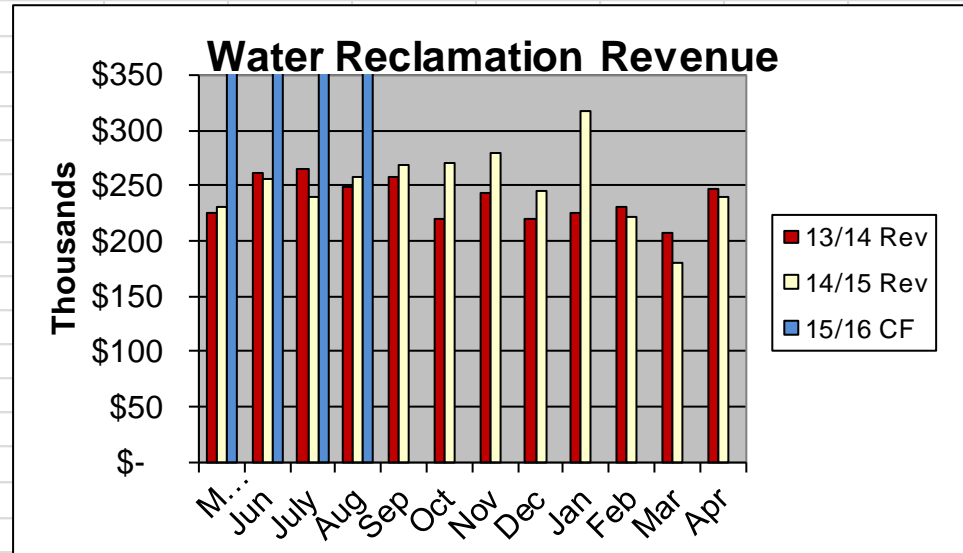
### WATER RECLAMATION C.F. SALES

Month	13/14 CF	14/15 CF	15/16 CF
May	4,780,396	5,120,245	4,326,208
Jun	5,695,426	5,843,622	5,432,884
July	5,840,629	5,441,946	5,385,040
Aug	5,479,165	5,649,713	5,112,912
Sep	5,632,986	6,102,863	-
Oct	4,665,716	6,171,012	-
Nov	5,393,390	6,517,996	-
Dec	4,646,954	5,719,064	-
Jan	4,843,393	7,658,692	-
Feb	4,964,979	5,073,586	-
Mar	4,363,147	3,880,448	-
Apr	5,056,409	5,538,539	-
<b>End of year total</b>	<b>61,362,590</b>	<b>68,717,726</b>	<b>20,257,044</b>
<b>Year to date compare</b>	<b>61,362,590</b>	<b>68,717,726</b>	<b>20,257,044</b>
<b>Delta to year before</b>		<b>111.99%</b>	<b>29.48%</b>



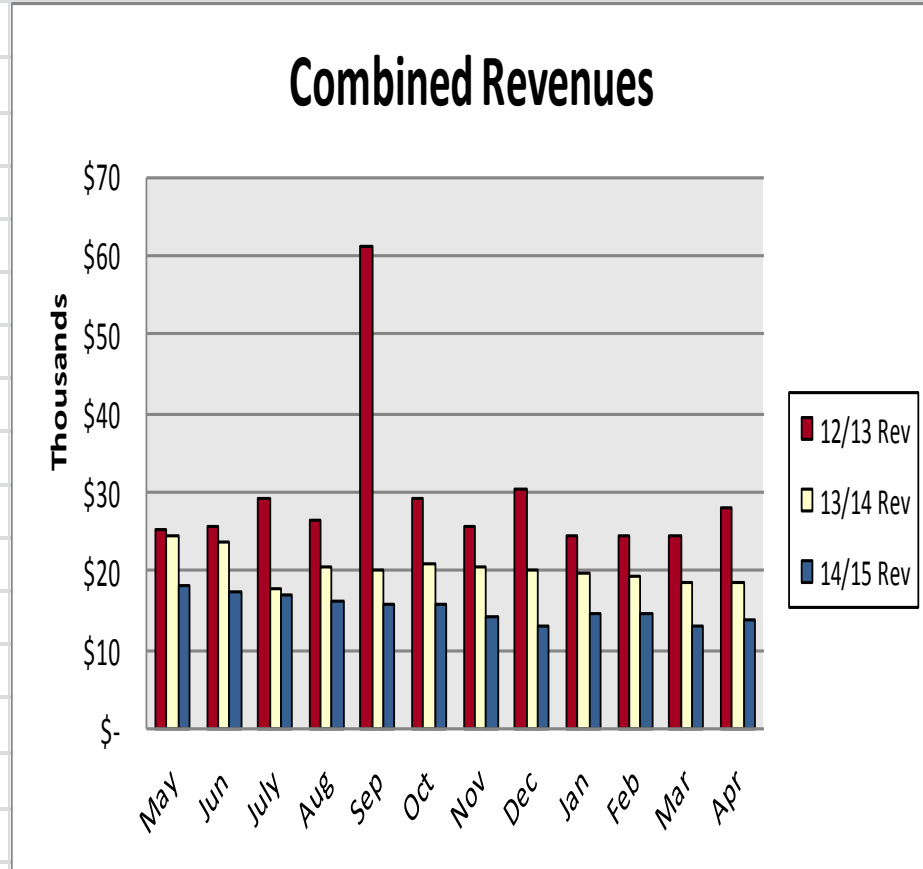
### WATER RECLAMATION REVENUE

Month	13/14 Rev	14/15 Rev	15/16 Rev
May	\$ 225,746	\$ 231,450	\$ 193,810
Jun	\$ 261,684	\$ 255,822	\$ 236,155
July	\$ 265,269	\$ 238,952	\$ 214,534
Aug	\$ 248,222	\$ 257,784	\$ 227,798
Sep	\$ 258,054	\$ 268,890	\$ -
Oct	\$ 220,174	\$ 269,898	\$ -
Nov	\$ 243,499	\$ 279,189	\$ -
Dec	\$ 220,594	\$ 245,360	\$ -
Jan	\$ 226,034	\$ 316,960	\$ -
Feb	\$ 229,941	\$ 221,011	\$ -
Mar	\$ 206,688	\$ 180,831	\$ -
Apr	\$ 247,363	\$ 240,630	\$ -
<b>End of year total</b>	<b>\$ 2,853,268</b>	<b>\$ 3,006,777</b>	<b>872,296</b>
<b>Year to date compare</b>	<b>2,853,268</b>	<b>3,006,777</b>	<b>872,296</b>
<b>Delta to year before</b>		<b>105.38%</b>	<b>29.01%</b>



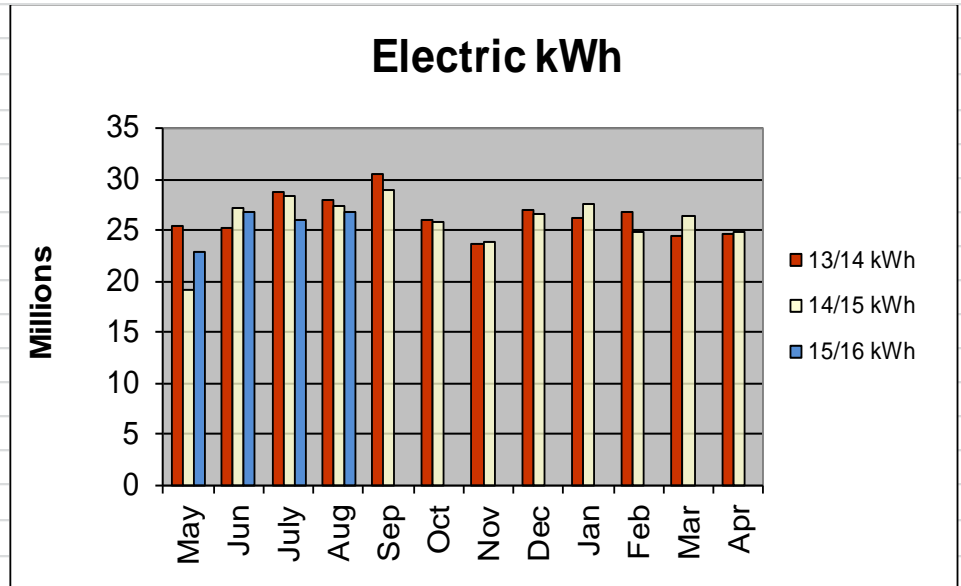
**COMBINED REVENUE (FIBER, WIRELESS, DIAL-UP, VOIP, DATA SERVICES)**

Month	12/13 Rev	13/14 Rev	14/15 Rev
May	25,306	24,432	18,288
Jun	25,766	23,574	17,265
July	29,036	17,955	17,063
Aug	26,369	20,400	16,238
Sep	61,131	20,252	15,949
Oct	29,033	20,754	15,732
Nov	25,762	20,467	14,167
Dec	30,215	20,201	13,186
Jan	24,295	19,865	14,795
Feb	24,283	19,189	14,778
Mar	24,332	18,711	13,113
Apr	27,968	18,624	13,848
<b>End of year total</b>	<b>353,497</b>	<b>244,425</b>	<b>\$ 184,423</b>
<b>Year to date compare</b>	<b>353,497</b>	<b>244,425</b>	<b>184,423</b>
<b>Delta to year before</b>		<b>69.14%</b>	<b>75.45%</b>



### ELECTRIC KWH SALES

Month	13/14 kWh	14/15 kWh	15/16 kWh
May	25,347,137	19,032,948	22,937,317
Jun	25,170,233	27,215,041	26,769,497
July	28,784,734	28,283,842	25,982,233
Aug	27,929,359	27,318,314	26,840,221
Sep	30,588,948	28,990,563	-
Oct	26,064,911	25,852,310	-
Nov	23,551,289	23,922,223	-
Dec	26,941,718	26,543,348	-
Jan	26,130,544	27,575,087	-
Feb	26,837,045	24,844,214	-
Mar	24,368,133	26,328,039	-
Apr	24,650,987	24,894,051	-
<b>End of year total</b>	<b>316,365,038</b>	<b>310,799,980</b>	<b>N/A</b>
<b>Year to date compare</b>	<b>107,231,463</b>	<b>101,850,145</b>	<b>102,529,268</b>
<b>Delta to year before</b>		<b>94.98%</b>	<b>100.67%</b>



### ELECTRIC REVENUE

Month	13/14 Rev	14/15 Rev	15/16 Rev
May	\$ 2,395,359	\$ 2,664,064	\$ 2,476,215
Jun	\$ 2,479,764	\$ 2,844,503	\$ 2,898,484
July	\$ 2,754,413	\$ 2,756,364	\$ 2,749,293
Aug	\$ 2,758,611	\$ 2,887,489	\$ 3,150,311
Sep	\$ 2,919,629	\$ 3,015,601	\$ -
Oct	\$ 2,480,557	\$ 2,698,549	\$ -
Nov	\$ 2,393,623	\$ 2,659,590	\$ -
Dec	\$ 2,586,495	\$ 2,771,607	\$ -
Jan	\$ 2,671,804	\$ 2,995,035	\$ -
Feb	\$ 2,869,770	\$ 2,756,720	\$ -
Mar	\$ 2,505,488	\$ 2,786,631	\$ -
Apr	\$ 2,550,099	\$ 2,726,798	\$ -
<b>End of year total</b>	<b>\$ 31,365,612</b>	<b>33,562,951</b>	<b>N/A</b>
<b>Year to date compare</b>	<b>10,388,147</b>	<b>11,152,420</b>	<b>11,274,303</b>
<b>Delta to year before</b>		<b>107.36%</b>	<b>101.09%</b>

